

IUGA eXchange 2011

Beijing, China

Final Report

Sep 24-25, 2011



IUGA Exchange Beijing 2011

REPORT

I . PREPARATORY MEETING

The preparatory meeting was held in Beijing, China on Oct. 29-31, 2010. IUGA Beijing eXchange Organizing Executives (IEOs) were Drs. Tsung-Hsien Su, Hanzal Engelbert and Willy Davila. The IEOs met with the local organizing committee under the leadership of Dr Lang Jinghe along with Dr. Zhu Lan and Dr Gong Xiaoming on Oct, 30 and 31. IEOs and local organizers including Drs Zhu Lan and Gong Xiaoming joined the 1st meeting at Taizhou and the following topics were discussed:

- IUGA's objectives for the eXchange program
- IUGA's requirements for supporting the program
- The benefits for both sides
- The obligations of both sides

IEOs and the local organizers including Dr. Lang Jinghe joined the work dinner for the 2nd meeting in Beijing and reached a consensus for the the eXchange program..

- China is a country having more than 1.3 billion population. As the social-economic condition has made a great progress, urogynecologic service is urgently needed.
- Most of the local gynecologists who more or less are dealing with female pelvic floor problems have not received formal urogynecologic training.
- There is a subspecialty society in China, but it still belongs to the group of Obstetrics and Gynecology, Medical Society of China. The policy of the subspecialty needs regulated by its mother society.

On the preparation meeting, the exchange language was discussed. As Mandarin is the primary language of communication in the medical field in China. Most of doctors who will attend are basically not fluent in English. Lectures will be translated into bilingual slides. IEOs also visited Peking Union Medical College Hospital and Shanghai Tongji Hospital for the meeting venue for the 1st and 2nd eXchange program. The date of 1st eXchange program was also discussed and was scheduled on Sep 24 to 25 2011 in Beijing. IEOs also discussed the topics for the 1st eXchange, as urogynecology in china is still not well developed, some basic topics and workshops were choosed for the 1st exchange. Jianguo Garden Hotel was choosed as the workshop venue. The total number of attendees was restricted to 40.

II IUGA eXchange Beijing 2011

a. Preparation

As Dr Tsung-Hsien Su cannot attend Beijing eXchange due to his personal schedule, IEOE had choosed Helena Frawley as the third IUGA faculty to attend the workshop. On Aug 12 2011, all the international faculties, Drs Wily Davila, , Elektra McDermott, local

secretary Dr Gong Xiaoming held an telephone meeting, the scientific program as well as the preparation were discussed on the meeting, physical therapy was added into the program. According to IUGA's regulation, the meeting venue was changed to Peking Union Medical College teaching building. Urogynecology Group in Chinese Society of Obstetrics and Gynecology (CSOB) was also appointed as the local organizer to help organizing the workshop. 8 executive members from the group and 2 urogynecologists were also added into the local faculty to help the workshop. CSOB secretary called doctors from different area to organize the workshop. 40 gynecologists from different provinces all over the country were registered before the meeting, not including 10 local faculties. In total, there are local 50 doctors attended the meeting.

All the lecture handouts from the international and local faculties were collected 2 weeks before the workshop. English slides were translated into Chinese. A brochure of lecture handout was printed in Beijing and was delivered to each attendee during registration. CD was also made with pdf files of the lectures. The handouts and CD's, using the official IUGA eXchange logo, contained the scientific program, the abstracts of all the lectures and workshops, a complete listing of the IUGA Faculty and Local Faculty, and a directory of all local urogynecology faculty. Badges and certificates were likewise made using the official IUGA eXchange logo.

b. IUGA eXchange program

The date of eXchange were Sep 22 to 23 2011, just before the 4th national china Urogynecology meeting which was held on Sep 24 to 25.

Elektra McDermott from IUGA office arrived 2 days earlier before the exchange, she visited the meeting venue. Due to the conflict of teaching program, we moved the teaching venue to college teaching building instead of hospital teaching building. As the busy schedule of the medical college, the classrooms were not on the same floor and were big enough to accommodate all the attendees.

An pre-course evaluation form was delivered to each attendee before the course.

The eXchange was opened by Dr. Lang Jinghe, chair of chinese obstetrician and gynecologist society and chairman of the department of obstetrician and gynecologist in Peking Union Medical College. Dr Wily Davila introduced the general information about IUGA and the eXchange.

As discussed in the preparation meeting, the first eXchange was focused on the basic knowledge of Urogynecology knowledge. 15 lectures were given in the two days eXchange program and 6 workshops were arranged in the two days.

An group photo was taken after the first day and followed by a welcome dinner in the Peking roasted duck restaurant.

At the end of the eXchange program, the post-exchange evaluation was done. A certificate was delivered by Dr Davila at the end of the program.

c. Financial report

The registration fee was 1000 RMB (156.25 USD) for each attendee. The total registration fee

was 40,000 RMB (6250 USD, no registration fee for local faculties.) There is no industry support. The detailed item was list in the following form. The shortage of the exchange was covered by CSOB. IUGA international faculties' flight and accommodation were covered by IUGA.

Form 1. Expense for eXchange Beijing.

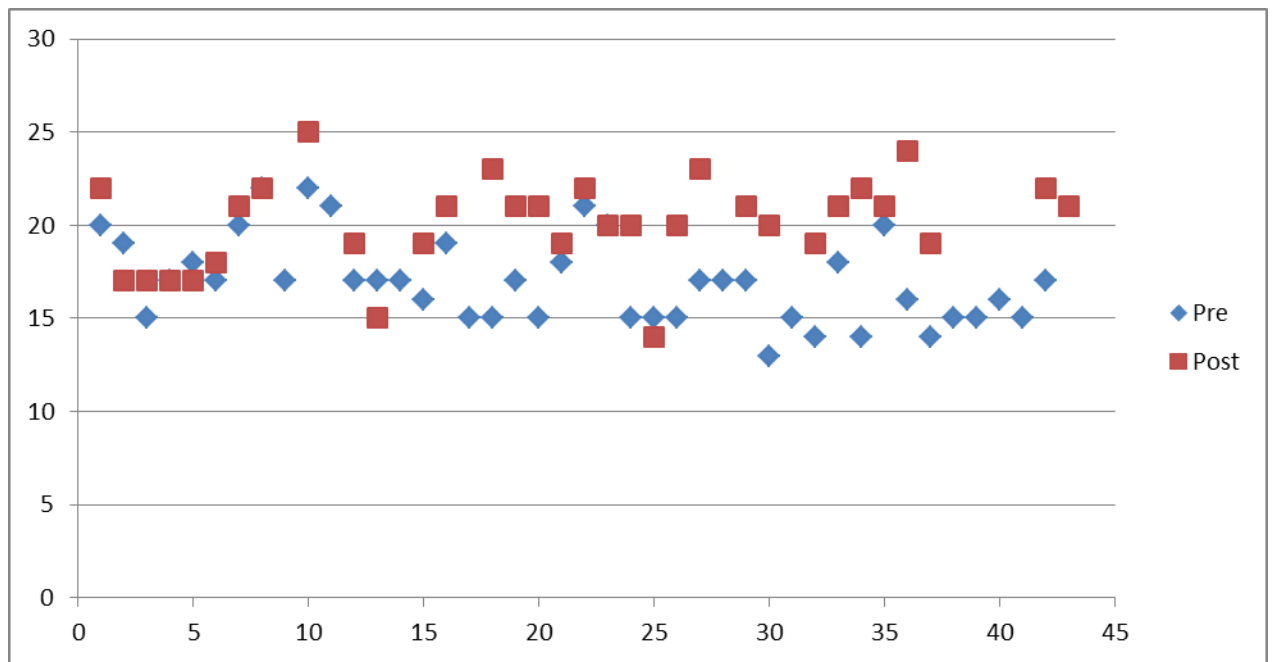
Item	Price (RMB)	Number	Subtotal (RMB)
Banner	200	2	400
Meeting Venue Rental	5000	1	5000
Disk	5	50	250
Material Printing	5	50	250
Brochures of handouts	40	50	2000
Mail			100
Welcome Dinner			16000
Gifts			512
Group Photo	500	1	500
Lunch	35	130	4550
Tea and fruit	1000	2	2000
Pens	10	55	550
Translation	2000	1	2000
Fee for students survice			1000
Wine			2000
Lecture fee for local faculty			3000
Accomodation for Local facutly			1080
Car pickup			500
Total			41692.00

d. Evaluation

We asked every speaker to provide 3 questions for each topic. Questions were translated into Chinese. Pre-course evaluation forms were given after the opening speech and post-course evaluation forms were given at the end the second day. The order of the questions are different.

Compared to the pre-course evaluation, most attendees got higher evaluation score after the program. See figure 1. Mean score difference is 3.42, SD 4.26.

Figure 1. Pre-course evaluation and Post-course evaluation comparison



Quality of the lectures and workshops were also evaluated by attendees, see the attached form 2 to 5.

Form 2. Quality of presentations and workshops.

Presentations/Speakers	Excellent	%	Good	%	Fair	%	Poor	%	No Reply	%
Urogynecologic Health Issues in China	24	77.4	6	19.4	1	3.2	0	0	0	0
Speaker: Jinghe Lang	19	61.3	3	9.7	0	0	0	0	9	29
IUGA Urogynecology Training Guidelines	20	64.5	5	16.1	1	3.2	0	0	5	16.1
Speaker: Willy Davila	16	51.6	2	6.45	0	0	0	0	13	41.9
Clinical Evaluation for Urogynecology Patients (History, Bladder Diary and Examination)	23	74.2	5	16.1	0	0	0	0	3	9.7
Speaker: Engelbert Hanzal	13	41.9	7	22.6	0	0	0	0	11	35.5
The Overactive Bladder Syndrome	20	64.5	5	16.1	0	0	0	0	6	19.4
Speaker: Xiaowen Tong	12	38.7	3	9.7	0	0	0	0	16	51.6
Cystoscopy for the Urogynecologist	20	64.5	8	25.8	0	0	0	0	3	9.7
Speaker: Engelbert Hanzal	12	38.7	5	16.1	1	3.2	0	0	13	41.9
Painful Bladder Syndrome and its Management	22	71	5	16.1	0	0	0	0	4	12.9
Speaker: Yong Yang	14	45.2	3	9.7	1	3.2	0	0	13	41.9
Pregnancy and the Pelvic Floor	21	67.7	6	19.4	1	3.2	0	0	3	9.7
Speaker: Willy Davila	13	41.9	4	12.9	0	0	0	0	14	45.2
Prolapse: Pathophysiology, Assessment and Pressary Treatment	20	64.5	5	16.1	1	3.2	0	0	5	16.1
Speaker: Engelbert Hanzal	11	35.5	5	16.1	1	3.2	0	0	14	45.2
Surgery Options/Update for Pelvic Organ Prolapse	24	67.7	1	3.2	1	3.2	0	0	5	16.1
Speaker: Willy Davila	14	45.2	2	6.5	0	0	0	0	15	48.4
To Mesh or not to Mesh: From Basic Concept to Clinical Application	24	77.4	2	6.5	1	3.2	0	0	4	12.9
Speaker: Engelbert Hanzal	12	38.7	3	9.7	0	0	0	0	16	51.6

Overactive Bladder and Overactive Detrusor: Epidemiology , Etiology and Presentation	20	64.5	7	22.6	2	3.2	0	0	2	6.5
Speaker: Xiaowen Tong	9	29	5	16.1	1	3.2	0	0	16	51.6
Conservative Treatment for Stress Urinary Incontinence and Prolapse	21	67.9	5	16.1	1	3.2	0	0	4	12.9
Speaker: Helena Frawley	12	38.7	4	12.9	0	0	0	0	15	48.4
Pharmacotherapy for LUTS	22	71	7	22.6	0	0	0	0	2	6.5
Speaker: Engelbert Hanzal	11	35.5	5	16.1	0	0	0	0	15	48.4
Surgery Treatment for Stress Urinary Incontinence	21	67.7	6	19.4	0	0	0	0	4	12.9
Speaker: Lan Zhu	11	35.5	4	12.9	0	0	0	0	16	51.6
Complications of Urogynecologic Surgery	25	80.6	4	12.9	0	0	0	0	2	6.5
Speaker: Willy Davila	13	41.9	2	6.5	0	0	0	0	16	51.6
Urine Retention and its Management	23	74.2	1	3.2	1	3.2	0	0	6	19.4
Speaker: Bo Song	15	48.4	3	9.7	0	0	0	0	13	41.9
Presentations										
Speakers										
WORKSHOPS	Excellent	%	Good	%	Fair	%	Poor	%	No Reply	%
Surgical Landmarks in Pelvic Anatomy	22	71	3	9.7	0	0	0	0	6	19.4
Chair: Engelbert Hanzal	16	51.6	4	12.9	0	0	0	0	11	35.5
Chair: Yongxian Lu	17	54.8	5	16.1	0	0	0	0	9	29
Cystometry and its Reading	17	54.8	4	12.9	0	0	0	0	10	32.3
Chair: Willy Davila	18	58.1	2	6.5	0	0	0	0	11	35.5
Chair: Jianliu Wang	17	54.8	5	16.1	0	0	0	0	9	29
Assessment Tools for Urinary Incontinence and Prolapse	18	58.1	3	9.7	1	3.2	0	0	9	29
Chair: Xiaowen Tong	16	51.6	4	12.9	2	6.5	0	0	9	29

Chair: Helena Frawley	16	51.6	4	12.9	0	0	0	0	11	35.5
Chair: Xin Luo	19	61.3	3	9.7	0	0	0	0	9	29
POP-Q	20	64.5	3	9.7	0	0	0	0	8	25.8
Chair: Engelbert Hanzal	18	58.1	3	9.7	0	0	0	0	10	32.3
Chair: Jianliu Wang	16	51.6	5	16.1	0	0	0	0	10	32.3
Vault Prolapse	20	64.5	3	9.7	0	0	0	0	8	25.8
Chair: Willy Davila	18	58.1	4	12.9	0	0	0	0	9	29
Chair: Lan Zhu	17	54.8	3	9.7	0	0	0	0	11	35.5
Physiotherapy in Urogynecology	16	51.6	6	19.4	0	0	0	0	9	29
Chair: Helena Frawley	17	54.8	6	19.4	0	0	0	0	8	25.8
Chair: Yongxian Lu	19	61.3	3	9.7	0	0	0	0	9	29

Form 3 Percentage of Good and Excellent of Presentations/ Speakers

	Presentations/Speakers Percent Good/Excellent
Urogynecologic Health Issues in China	96.8
Speaker: Jinghe Lang	71
IUGA Urogynecology Training Guidelines	80.6
Speaker: Willy Davila	58.05
Clinical Evaluation for Urogynecology Patients (History, Bladder Diary and Examination)	90.3
Speaker: Engelbert Hanzal	64.5
The Overactive Bladder Syndrome	80.6

Speaker: J. Jose	48.4
Cystoscopy for the Urogynecologist	90.3
Speaker: Engelbert Hanzal	54.8
Painful Bladder Syndrome and its Management	87.1
Speaker: Yong Yang	54.9
Pregnancy and the Pelvic Floor	87.1
Speaker: Willy Davila	54.8
Prolapse: Pathophysiology, Assessment and Pressary Treatment	80.6
Speaker: Engelbert Hanzal	51.6
Surgery Options/Update for Pelvic Organ Prolapse	70.9
Speaker: Willy Davila	51.7
To Mesh or not to Mesh: From Basic Concept to Clinical Application	83.9
Speaker: Engelbert Hanzal	48.4
Overactive Bladder and Overactive Detrusor: Epidemiology , Etiology and Presentation	87.1
Speaker: Xiaowen Tong	45.1
Conservative Treatment for Stress Urinary Incontinence and Prolapse	84
Speaker: Helena Frawley	51.6
Pharmacotherapy for LUTS	93.6
Speaker: Engelbert Hanzal	51.6
Surgery Treatment for Stress Urinary Incontinence	87.1
Speaker: Lan Zhu	48.4
Complications of Urogynecologic Surgery	93.5
Speaker: Willy Davila	48.4
Urine Retention and its Management	77.4

Speaker: Bo Song

58.1

Form 4. Percentage of Good and Excellent of Workshops/ Speakers

	Workshops/Speaker Percent Excellent/Good
Surgical Landmarks in Pelvic Anatomy	80.7
Chair: Engelbert Hanzal	64.5
Chair: Yongxian Lu	70.9
Cystometry and its Reading	67.7
Chair: Willy Davila	64.6
Chair: Jianliu Wang	70.9
Assessment Tools for Urinary Incontinence and Prolapse	67.8
Chair: Xiaowen Tong	64.5
Chair: Helena Frawley	64.5
Chair: Xin Luo	71
POP-Q	74.2
Chair: Engelbert Hanzal	67.8
Chair: Jianliu Wang	67.7
Vault Prolapse	74.2
Chair: Willy Davila	71
Chair: Lan Zhu	64.5
Physiotherapy in Urogynecology	71
Chair: Helena Frawley	74.2
Chair: Yongxian Lu	71

Commence by attendees:

1) Most useful part of the course?

- Conservative treatment and treatment of vault prolapse
- Surgery options/updates for POP
- Painful bladder syndrome and its management
- Urine retention and its management
- Traditional surgery and mesh use
- Basic knowledge such as anatomy and standard treatment of PFD's
- To mesh or not to mesh. Anatomy of pelvic was excellent
- Conservative treatment and complications of urogynecology surgery
- Workshop is special and useful for our clinical practice
- Basic concept and clinical application
- All parts
- Surgery types of POP
- All the courses are useful and interesting. I like the workshop most.
- Surgical options. PBS, complication, land marks in pelvic anatomy
- Painful bladder syndrome and its management
- Content of OAB
- Every workshop
- OAB, luts, cystoscopy for the urogynecologist and prolapse: assessment and treatment

How can make the course better?

- Better discussion between specialist and participants
- more case discussion
- overactive bladder
- Videos about surgery and more treatment guidelines
- workshop, communication with each other face to face
- active communication between teachers and students
- Dilemma of POP
- Corpse anatomy
- videos with data of operations

How will this course change your practice?

- Gave me some new concepts
- New ideas such as procima, TVTs, vault prolapse and OAB treatment
- To consider or not consider mesh products with regard to surgery
- pay more attention to evidence in practice
- Try physical therapy
- Help to understand diagnosis, treatment and risks of POP better
- Conservative treatment for stress urinary incontinence and prolapse
- confidence
- I will consider conservative therapy as first line therapy
- This course changes some concept for me. I will regulate some treatments for patients
- luts and OAB management

Additional comments/suggestions

- We need lectures PFD and SUI with clinical research works and RCT outcomes
- Excellent, well done
- Helped a lot in daily clinical work
- Chronic pelvis pain
- Excellent, looking forward to next program
- I liked Mr. Davila's lessons. He gives us new useful knowledge of PFD.
- Anatomy of pelvic floor with corpse
- We need guidelines of SUI/POP from IUGA.

e. Faculty

IUGA FACULTY

G. Willy Davila, MD

Chairman, Department of Gynecology
Head, Section of Urogynecology and Female
Pelvic Floor Disorders
Cleveland Clinic Florida
Weston, Florida USA

Univ. Professor Dr. Engelbert Hanzal

Universitätsklinik für Frauenheilkunde
Medizinische Universität Wien
Wien, Austria

Helena Frawley, Ph D

Specialist Continence & Women's Health
Physiotherapist
National Institute of Clinical Studies
(NH&MRC) Research Fellow,
Senior Lecturer, Physiotherapy
Melbourne School of Health Sciences
The University of Melbourne
Parkville, Australia

LOCAL FACULTY

Professor Dr. Jinghe Lang

Chairman, Department of Obstetrics and Gynecology
Peking Union Medical College Hospital,
Beijing, P.R. China

Professor Dr. Lan Zhu

Vice Chairman, Department of Obstetrics and Gynecology,
Peking Union Medical College Hospital,
Beijing, P.R. China

Professor Yanfeng Song

Chairman, Department of Obstetrics and Gynecology

Fujian General Hospital of Nanjing Military Command
Fuzhou, P.R. China

Professor Dr. Yongzian Lu

Chairman, Department of Obstetrics and Gynecology
Military 304 Hospital,
Beijing, P. R. China

Professor Xiaowei Zhang

Chairman, Department of Obstetrics and Gynecology
1st Affiliated Hospital, Guangzhou Medical College
Guangzhou, P.R. China,

Professor Dr. Jianliu Wang

Vice Chairman, Department of Obstetrics and Gynecology,
Beijing People's Hospital,
Beijing, P.R. China,

Professor Dr. Xiaowen Tong

Chairman, Department of Obstetrics and Gynecology
Tongji Hospital
Shanghai, P.R. China

Professor Dr Xin Luo

Chairman, Department of Obstetrics and Gynecology
1st affiliated hospital of Jinan University
Guangzhou, P.R. China

Professor Dr Yong Yang

Chairman, Department of Urology
Beijing Chao Yang Hospital,
Beijing, P.R. China

Professor Dr. Bo Song

Department of Urology
Southwest Hospital,
Chongqing, P.R. China

Local Secretary

Xiaoming Gong, MD

Department of Obstetrics and Gynecology
Peking Union Medical College Hospital,

Beijing, P.R. China

f. List of Attendees

No	Name	Sex	Title	Hospital	Province	City
	Jinghe					
1	Lang	Male	Professor	Peking Union Medical College Hospital	Beijing	Beijing
2	Lan Zhu	Female	Professor	Peking Union Medical College Hospital	Beijing	Beijing
	Xiaoming		Associate			
3	Gong	Male	Professor	Peking Union Medical College Hospital	Beijing	Beijing
	Honghui					
4	Shi	Female	Professor	Peking Union Medical College Hospital	Beijing	Beijing
	Jianliu					
5	Wang	Male	Professor	Peking University People's Hospital	Beijing	Beijing
6	Xiuli Sun	Female	Professor	Peking University People's Hospital	Beijing	Beijing
7	Yali Miao	Female	Dr	Peking University People's Hospital	Beijing	Beijing
8	Li Jiang	Female	Dr	Peking University People's Hospital	Beijing	Beijing
				Third Affiliated Hospital of		
9	Juan Liu	Female	Professor	Guangzhou Medical College	Guangdong	Guangzhou
	Jinsong					
10	Han	Female	Professor	Peking University Third Hospital	Beijing	Beijing
11	Fuli Zhu	Female	Dr	Peking University Third Hospital	Beijing	Beijing
12	Kun Zhang	Male	Dr	Peking University Third Hospital	Beijing	Beijing
	Yongxian					
13	Lu	Female	Professor	Beijing 304 Hospital of PLA	Beijing	Beijing
14	Wenji Shen	Female	Professor	Beijing 304 Hospital of PLA	Beijing	Beijing
				Capital Medical University, Beijing		
15	Le Ma	Male	Dr	Maternity Hospital	Beijing	Beijing
				People's Liberation Army General		
16	Ning Zhou	Male	Professor	Hospital (301)	Beijing	Beijing
				Beijing Chaoyang Hospital, Capital		
17	Hong Wang	Female	Dr	Medical University	Beijing	Beijing
	Yanfeng			Fuzhou General Military Hospital of		
18	Song	Female	Professor	Nanjing	Fujian	Fuzhou
	Rongrong			Fuzhou General Military Hospital of		
19	Zhuang	Female	Doctor	Nanjing	Fujian	Fuzhou
	Xiaowei			First Affiliated Hospital of		
20	Zhang	Female	Professor	Guangzhou Medical College	Guangdong	Guangzhou
				First Affiliated Hospital of		
21	Yanxia Li	Female	Dr	Guangzhou Medical College	Guangdong	Guangzhou
	Xiaojun		Associate	Obstetrics and Gynecology Hospital of		
22	Chen	Female	Professor	Fudan University	Shanghai	Shanghai
23	Xiaofang	Female	Dr	Obstetrics and Gynecology Hospital of	Shanghai	Shanghai

	Yi			Fudan University		
				Shanghai Jiaotong University		
24	Rui Zhang	Female	Professor	Affiliated Sixth People's Hospital	Shanghai	Shanghai
				Shanghai Jiaotong University		
25	Laimin Luo	Female	Professor	Affiliated Sixth People's Hospital	Shanghai	Shanghai
				Guangzhou First Affiliated Hospital		
26	Xin Luo	Male	Professor	of Jinan University	Guangdong	Guangzhou
	Xiaoyu			Guangzhou First Affiliated Hospital		
27	Wang	Female	Professor	of Jinan University	Guangdong	Guangzhou
28	Peishu Liu	Female	Professor	Qilu Hospital of Shandong University	Shangdong	Jinan
	Hangmei			Obstetrics and Gynecology Hospital, Zhejiang University School of		
29	Jin	Female	Dr	Medicine	Zhejiang	Hangzhou
	Jingyan			Nanjing First Hospital of Nanjing		
30	Xie	Female	Dr	Medical University	Jiangshu	Nanjing
	Ouping			Maternal and Child Health Hospital of		
31	Huang	Male	Professor	Jiangxi	Jiangxi	Nanchang
				Maternal and Child Health Hospital of		
32	Liqun Wang	Female	Dr	Jiangxi	Jiangxi	Nanchang
				Shengjing Hospital of Shenyang,		
33	Zhijun Xia	Male	Professor	Liaoning	Liaoning	Shenyang
				Xinjiang Autonomous Region People's		
34	Hatiguli	Female	Professor	Hospital	Xingjiang	Urumqi
	Xianghua			Second Hospital of Hebei Medical		
35	Huang	Female	Professor	University	Hebei	Shijiazhuang
36	Hong Shen	Male	Professor	Huaxi Hospital of Sichuan University	Shichuang	Chengdu
	Xiangyang					
37	Jiang	Male	Professor	Shanxi Provincial People's Hospital	Shanxi	Xian
	Yuling					
38	Wang	Female	Dr	Foshan MCH	Guangdong	Foshan
	Xiaowen			Tongji Hospital, Tongji University,		
39	Tong	Male	Professor	Shanghai	Shanghai	Shanghai
				Affiliated Hospital of Ningxia		
40	Jichun Li	Female	Professor	Medical University	Ningxia	Yingchuang
41	Ruizhen Li	Female	Professor	Peking University Shenzhen Hospital	Guangdong	Shenzhen
42	Huan Li	Female	Professor	Peking University Shenzhen Hospital	Guangdong	Shenzhen
	Yanzhou					
43	Wang	Male	Dr	Chongqing Southwest Hospital	Chongqing	Chongqing
44	Lili Cao	Female	Dr	Chongqing Southwest Hospital	Chongqing	Chongqing
				Second Hospital of Hebei Medical		
45	Bin Shi	Female	Dr	University	Hebei	Shijiazhuang
			Associate			
46	Yanbo Li	Female	Professor	Wuhan University People's Hospital	Hubei	Wuhan

			Associate			
47	Li Hong	Female	Professor	Renming Hospital of Wuhan University	Hubei	Wuhan
48	Ye Lu	Female	Dr	Peking University First Hospital	Beijing	Beijing
49	Bo Song	Male	Professor	Southwest Hospital, Chongqing	Chongqing	Chongqing
50	Yong Yang	Male	Professor	Beijing Chaoyang Hospital	Beijing	Beijing

g. Group Photo

IUGA EXCHANGE PROGRAM BEIJING 2011.09.22



h. Scientific Program

Day 1: Thursday September 22, 2011

8:00–8.30 Registration

8.30–8:45 Opening Speech (Lang Jinghe, Willy Davila, Moderator: Zhu Lan)

8:45–9:00 Pre eXchange Program Evaluation (Delegates)

PLENARY SESSION: Moderator: Willy Davila, Lan Zhu

9:00–9:20 Urogynecologic Health Issues in China

Jinghe Lang

9:20–9:40 IUGA Urogynecology Training Guidelines

Willy Davila

9:40–10:00 Clinical Evaluation for Urogynecology Patients (History, Bladder Diary, Examination)

Engelbert Hanzal

10:00-10:10 Q and A

10:10-10:40 COFFEE/TEA BREAK

10:40-11:40 **Workshop Rotation 1: WORKSHOPS 1-3 (see descriptions below)**

PLENARY SESSION: Moderator: Willy Davila /Yanfeng Song

11:40-12:00 Cystoscopy for the Urogynecologist

Engelbert Hanzal

12:00-12:20 Painful Bladder Syndrome and its Management

Yong Yang

12:20-12:30 Q and A

12:30-13:30 LUNCH

13:30-14:30 **Workshop Rotation 2: WORKSHOPS 1-3 (see descriptions below)**

PLENARY SESSION: Moderator: Helena Frawley/Jianliu Wang

14:30-14:50 Pregnancy and the Pelvic Floor

Willy Davila

14:50–15:10 Prolapse: Pathophysiology, assessment and pessary treatment

Engelbert Hanzal

15:10–15:30 Surgery Options/Update for Pelvic Organ Prolapse

Willy Davila

15:30–15:50 To Mesh or not to Mesh? From Basic Concept to Clinical Application

Engelbert Hanzal

15:50-16:00 Q and A

16:00–17:00 **Workshop Rotation 3: WORKHOPS 1-3 (see descriptions below)**

17:00–17:30 Summary of Day 1 & Group Photo

Day 2: Friday September 23, 2011

PLENARY SESSION: Moderator: Xiaowei Zhang/Yongxian Lu

8:30–8:50 Overactive Bladder and Overactive Detrusor: Epidemiology, Etiology, Presentation

TBD

8:50–9:10 Conservative Treatment for Stress Urinary Incontinence and Prolapse

Helena Frawley

9:10-9:20 Q and A

9:20:10:20 **Workshop Rotation 1: WORKSHOPS 4-6 (see description below)**

10:20-10:50 COFFEE/TEA BREAK

PLENARY SESSION: Moderator: Willy Davila/Xiaowen Tong

10:50-11:10 Pharmacotherapy for LUTS

Bo Song

11:10-11:30 Surgery Treatment for Stress Urinary Incontinence

Lan Zhu

11:30-11:40 Q and A

11:40-12:40 **Workshop Rotation 2: WORKSHOPS 4-6 (see description below)**

12:40-13:40 LUNCH BREAK

PLENARY SESSION: Moderator: Engelberg Hanzal/Xiaowei Zhang

13:40–14:00 Complications of Urogynecologic Surgery

Willy Davila

14:00–14:20 Urine Retention and its Management

Bo Song

14:20-14:30 Q and A

14:30-15:30 **Workshop Rotation 3: WORKSHOPS 4-6 (see description below)**

15:30-15:45 Post eXchange Program Evaluation (Delegates)

15:45-16:15 Summary of Day 2; Closing Remarks; Certificate Presentation (Jinghe

Lang)

Workshops (60 minutes each)

Workshop 1

Surgical Landmarks in Pelvic Anatomy

Chairs: Engelbert Hanzal/ Yongxian Lu

Vaginal surgery can be an arduous task without sufficient knowledge of the pelvis and pelvic floor. With the help of pelvic models, the participant will be guided through the pelvis and pelvic floor together with its muscular, connective tissue, and bony landmarks. A must for any vaginal surgeon.

Workshop 2

Cystometry and its Reading

Chairs: Willy Davila/Jianliu Wang

Bladder control problems result from alterations in bladder function. Without appropriate evaluation, management may be harmful. The office cystometry is a useful tool for the initial assessment of urinary complaints. The participant will learn the technique and application of the cystometry as well as learn to interpret results.

Workshop 3

Assessment Tools for Urinary Incontinence and Prolapse

Chairs: Xiaowen Tong / Helena Frawley /Xin Luo

Drinking and micturition almost goes unconsciously - or do you remember exactly how often you went to the toilet during the last 10 hours? In healthy people this does not matter much, however, when continence is impaired, fluid intake, micturition volumes and incontinence episodes become very important. Also impact of pelvic floor problems on quality of life have to be measured accurately in urogynecology to adequately plan treatment and measure its effects. In this workshop, important assessment tools like quality of life questionnaires and micturition charts will be demonstrated in a hands-on fashion.

Workshop 4

POP-Q

Chairs: Engelbert Hanzal /Jianliu Wang

In 1996 the International Continence Society published a standardisation report on a system to metrically measure female pelvic organ prolapse - the pelvic organ prolapse quantification system - by documenting 9 specific measurements. Since then the "POPQ" has increasingly been used by clinicians and scientists to more accurately describe individual patients' conditions and to objectify outcomes of interventions. There are two types of criticism you may have come across: one that POPQ should include even more measurements and the other that it was too complicated.

In this hands-on workshop we will teach participants how to do POPQ measurements using

simple models and thereby judge themselves how easy/complicated this important diagnostic tool really is.

Workshop 5

Vault Prolapse

Chairs: Willy Davila/ Lan Zhu

Most cases of advanced pelvic organ prolapse have associated weakness of apical support (vault prolapse). Restoring vault support is a key component to the success of reconstructive surgery. There are many successful techniques to restore apical support, but identification of vault support weakness can be challenging, even to the most experienced surgeon. This is especially true in the post-hysterectomy patient. This workshop will focus on means of identifying vault prolapse in the hysterectomized and non-hysterectomized patient, and discuss the various effective surgical techniques for restoration of vault support.

Workshop 6

Physiotherapy in Urogynecology

Chairs: Helena Frawley/Yongxian Lu

The pelvic floor muscles (PFM) comprise the urogenital and pelvic diaphragm. When there is lack of pelvic support and urethral closure pressure, the aim of PFM training is to build up the muscle function to the point where automatic response is possible. When there is overactivity in the PFM or pain, the aim is to relax and stabilise the muscle response, so normal function is possible. Different measurement methods can be used to assess PFM function. This workshop aims to guide the participants in proper instruction and performance of pelvic floor muscle exercises.

i. Materials

CD cover



Syllabus Cover

